

Airgonomics Ltd.

Unit 17, Stafford Park 17
Telford. Shropshire.

TF3 3DN

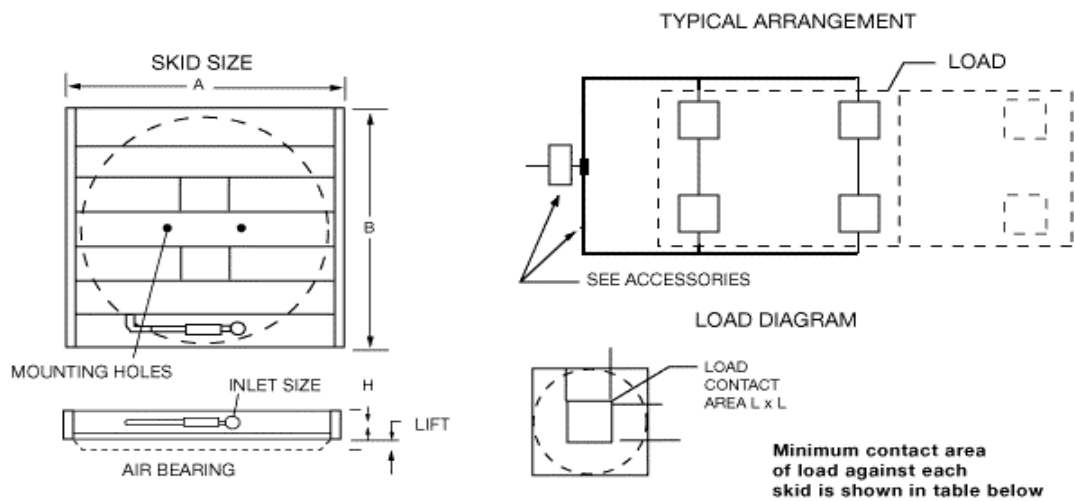
Tel; 01952 299920

Fax; 01952 290063

Email; sales@airgonomics.co.uk

Website; www.airgonomics.co.uk

AIRSKATE SPECIFICATIONS



MODEL NO.	CAPACITY	DIMENSIONS AXBXH	MOUNTING HOLES	INLET SIZE NPT	LIFT	FLOW CFM M3/MIN EACH	BEARING NUMBER	MINIMUM LOAD AREA L X L	WT.
ABS10H	Per Skate 500 Kg	280 x 280 x 70	2 @ M10 on 70 mm Ctr	1/8 in	.95 cm	2 - 5.0 .05 -.13	AB10H	9.1 x 9.1 cm	8Kg
ABS12H	Per Skate 1,360 kg	330 x 330 x 70 mm	2 @ M10 on 70mm Ctr	1/8 in	.95 cm	3 - 6 .08 -.16	AB12H	10.2 x 10.2 cm	10 kg
ABS14H	Per Skate 1,800Kg	420 x 420 x 70 mm	2 @ M10 on 70mm Ctr	1/8 in	1.02 cm	4 -10 .11-.28	AB14H	11.5 x 11.5 cm	15 kg
ABS17H	Per Skate 2,835 kg	470 x 464 x 73 mm	2 @ M10 on 70mm Ctr	3/8 in	1.27 cm	8-15 .22-.42	AB17H	12.7 x 12.7 cm	20kg
ABS20H	Per Skate 3,970 kg	552 x 540 x 73 mm	2 @ M10 on 70mm Ctr	3/8 in	1.58 cm	12-20 .33-.56	AB20H	15.2 x 15.2 cm	30 kg
ABS24H	Per Skate 5,670 kg	648 x 641 x 89 mm	2 @ M10 on 100mm Ctr	3/8 in	1.9 cm	15-25 .42-.70	AB24H	15.2 x 15.2 cm	40 kg
ABS30H	Per Skate 9,640 kg	800 x 800 x 89 mm	2 @ M10 on 100mm Ctr	3/8 in	2.54 cm	20-35 .56-.99	AB30H	17.7 x 17.7 cm	50 kg
ABS36H	Per Skate 14,175 kg	1000 x 1000 x 100 mm	2 @ M10 on 100mm Ctr	1/2 in	3.1 cm	25-40 .56-1.1	AB36H	20.3 x 20.3 cm	80 kg
ABS48H	Per Skate 23,815 kg	1300 x 1300 x 100 mm	4 @ 1/2 - 13 on 8" Ctr	1/2 in	3.81 cm	40-50 1.1-1.4	AB48H	25.4 x 25.4 cm	200 kg